



Integrated Security and Access Control



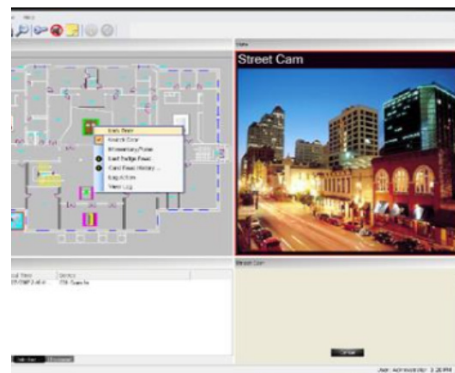
model - description

SA - Access Control Panel
 Requires 110VAC 5A
 24"x44"x6" (can be recessed 3" into wall)
 Larger enclosures allow for accessories and expansion.
 Dual power supplies and batteries ensure reliability.
 Core programming by Bri-Tech experts.

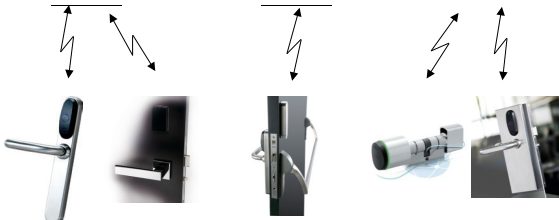
Bri-Tech's access control panels have been relied on by some of the leading NY Metro Area corporations and institutions for over 25 years. These panels are administrated by a feature-rich event-management software, which gives its users more control over their facilities' security than ever before. It ensures maximum flexibility to address current needs, as well as scalability to address future requirements. Access control panels can be configured for a small office, a large facility or integrated across an entire campus with a multitude of access points.

Expandability from one entry to multi-site enterprise with a wide range of administrator option settings. The software platform supports the following:

- | | |
|--------------------|----------------------------|
| Web Client | Event Management |
| Graphical Maps | Photo ID Badging |
| Smart Card | CCTV, DVR, NVR Integration |
| Elevator Control | Parking Control |
| Visitor Management | Muster Reports |



ACCESS CONTROL SYSTEM ELEMENTS & FEATURES



Wireless Door Locks



Control Panel
 (24' x 48" x 6")
Main Controller
Dual Batteries
Wired and Wireless Capabilities
Requires 110VAC 5A



Security System Integration, Card Read - Disarm/Arm/Report, "Lock Down" Capability



Door Locks (Magnetic, Lockset) Wired & Wireless



Camera System Integration, Video Verification & Capture



Biometric Reader Compatibility



Motorized Door Control



Auto Gate Control



The latest software upgrades now offer administrative control from mobile devices. This is in addition to the intuitive navigation features that make administration of even the largest systems easy.